

PROFESSIONAL.
RELIABLE.
ACCURATE.



CONTENT



04

THE COMPANY

05

MISSION STATEMENT

06

QUALITY

08

SIGNATURE

18

TITAN6

28

DETAILS

29

CHARACTER

30

WORLDWIDE

YESTERDAY. TODAY. TOMORROW.



We are a family-run, company based in Kufstein and have been producing high-quality hunting rifles under the company name Rössler AUSTRIA since 1996.

 **Made in Austria**

Our rifles have been known and sought after by hunters worldwide for many years. Rössler rifles impress with their precision and shot performance, intuitive operation, solid workmanship and elegance. All-round reliable rifles with personality and flexibility. Because our hunting rifles are equipped with modern interchangeable barrel technology.

The production of high quality hunting rifles – so far approx. 35,000 pieces - is one of our heartfelt concerns. The other is combining traditional craftsmanship with modern technology. This was already important to our company's founder, Erich Rössler. We support young talents in the forward-looking field of metal technology and at the same time we employ traditional gunsmiths. In this way, tradition and innovation cross-fertilize.

Erich Rössler (2nd from left) in 1968 as a journeyman at the master gunsmith Urschitz in Amstetten, pictured with his colleagues.

ONLY THE INTERACTION RESULTS IN SUCCESS

1

PROFESSIONALISM

Build on practical experience and use the latest scientific findings. We manufacture all essential mechanical rifle parts in-house and train our own apprentices in the field of metal technology and in the traditional craft of gunsmithing. This is the only way to produce hunting rifles of the highest quality - for a clientele that expects the best from us and gets it.

2

RELIABILITY

Weapons are highly sensitive commodities. They must function reliably under all circumstances - 100% and not 1% less. The same applies to our service. The use of the latest production techniques and the ongoing training and education of our employees ensure above-average satisfaction - among our workforce and our customers.

3

ACCURACY

Almost doesn't count. That's why we only accept bullseyes. As is well known, the precision of the bullet shot has a significant influence on the hunting accuracy. Thanks to regular feedback from our customers, we are constantly gaining new insights into the development potential of our rifles. In this way, we increase the quality of our rifles and enhance the accuracy of our customers.

INTERNAL VALUES

WOOD

Our stocks are made of European nut wood of the highest quality. Our Italian suppliers are family-run businesses with decades of experience in the manufacturing of stocks. The wood is carefully selected and left to mature for several years. Only when it has reached the optimal moisture level is it professionally crafted into a Rössler AUSTRIA stock.

METAL

We procure our metals (steel and aluminum) exclusively from suppliers whom we trust and have long-standing relationships with. Our main steel components are made of tempered steel. The aluminum used is exclusively high-strength aluminum, which is also used in the aerospace industry. All the metal components we produce undergo extensive finishing procedures from our experts to ensure that they meet our exacting standards.

ASSEMBLY

The final assembly of our weapons is performed by highly-trained gunsmiths with years of professional experience. We have a robust cross-checking system in place for complete quality control: Mr. Rössler personally performs the final inspection of each weapon after it is assembled and given a first inspection by our craftsmen. Our products only leave the house when the perfect condition and all functionalities have been confirmed twice.

BARREL

We obtain our barrels from established German companies, which are known worldwide for the quality and accuracy of their products. Our barrels, which are hammered or drawn without cutting, are manufactured from special rifle steel. The secret of the high quality and unparalleled precision of the barrels lies in the combination of the latest technologies, traditional knowledge and exact manufacturing processes.

SYNTHETICS

Our plastic stocks are manufactured by a German or Austrian plastics engineering operation that is certified according to DIN EN ISO 9001:2008. The special plastic used is composed of 30 % fiberglass, which makes our stocks shatterproof and extremely rigid. This is of particular importance to our customers, because a stiffer stock results in a more precise weapon.

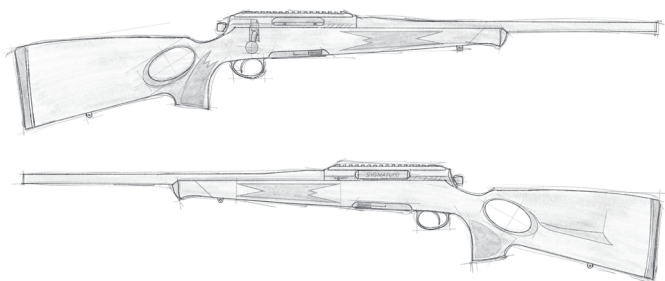
WORK PHILOSOPHY

Why settle for good when you can have better? We are continually optimizing our work processes, our techniques, and our know-how in order to improve our products. We pay great attention to detail without losing sight of the big picture. We are open to suggestions and constantly challenging ourselves to do better. The team discusses working methods and processes weekly.

HISTORY OF CREATION AND NAMING OF THE SIGNATURE

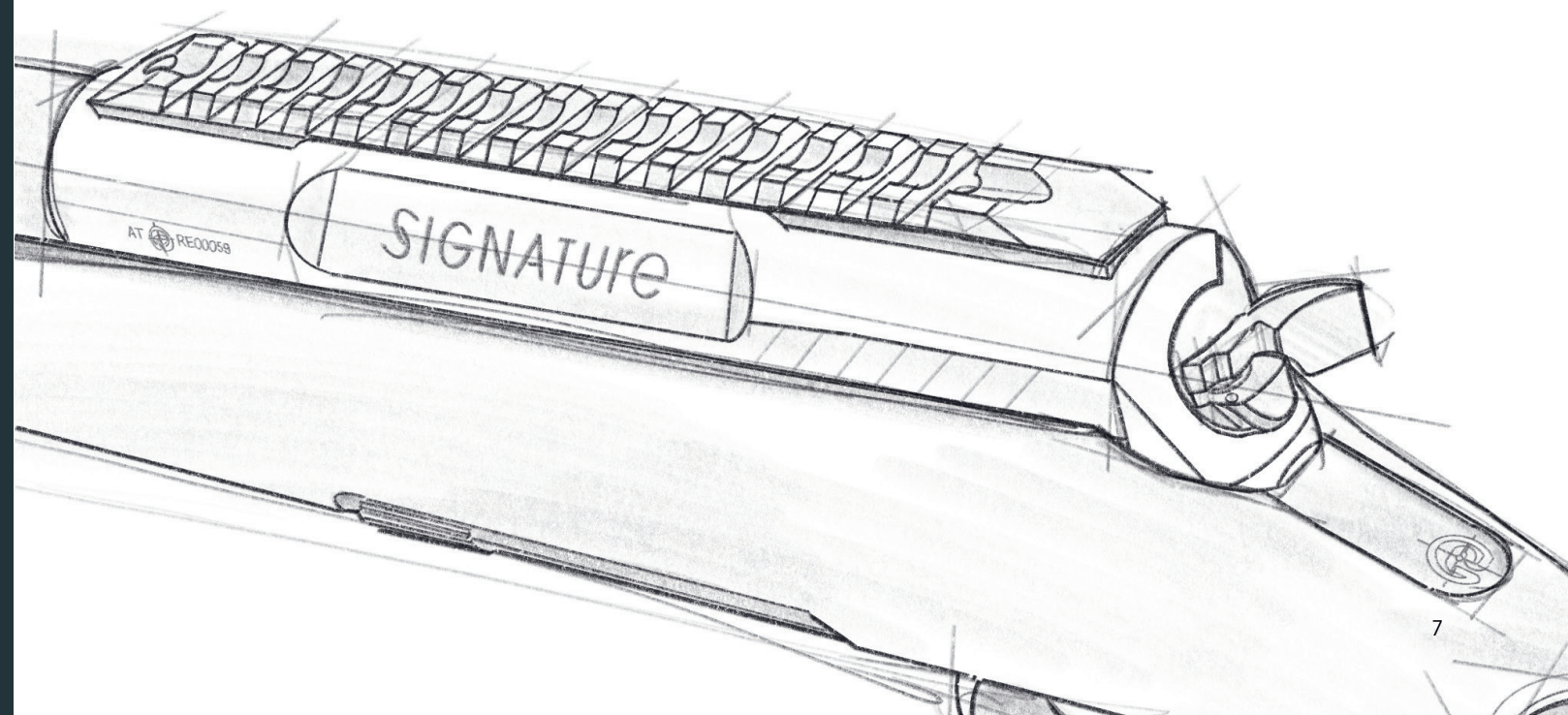
THE FOUNDAMENT

The **SIGNATURE** is more than just a hunting rifle - it is a homage to our family tradition and a signpost to the future. As a successful family business, we at Rössler-RÖWA have always focused on professionalism, reliability and marksmanship. These principles have guided us since Erich Rössler founded the company in 1997.



Erich Rössler has always been convinced that one must constantly improve and always be on the move. He laid down this production philosophy in an internal working instruction and signed it with his short signature „re“. After the death of Erich Rössler in 2010, his sons Walter and Philipp have continued this philosophy and have now also developed a new rifle model with manual cocking system. As a tribute to the production philosophy laid down by Erich, which is the foundation of the company's success, they have decided to give this model the name **SIGNATURE**. In the logo of the new bolt-action rifle model the last two letters of the **SIGNATURE** are written in lower case to refer to Erich's short signature „re“.

The **SIGNATURE** is thus a signature for quality and innovation and stands for the values and philosophy that have guided us since the foundation of the company. We cordially invite you to convince yourself of the quality of the **SIGNATURE** and become part of our successful tradition.



SIGNATURE

A rifle as it should be: shapely, reliable, accurate. Our new development **SIGNATURE** convinces with the best of over **25 years of experience** in hunting rifle production and a safe and easy to use manual cocking system.

When every second counts: Hunting success and hunting justice are significantly supported by the legendary precision of our rifles and by their intuitive operation immediately before the shot is fired.

The requirements of hunting and needs of the hunter may change. We have the right answer – the **SIGNATURE** is equipped with modern interchangeable barrel technology. So you can look to the future with confidence.



1 Stock

2 Receiver

3 Manual Cocking System

4 Trigger

5 Magazine

SIGNATURE

1

STOCK

The ergonomic design of the stocks reduces the felt recoil.

2

RECEIVER

The receiver is offered in hard anodized aluminum with a black matte finish. A continuous steel Picatinny rail is pre-mounted at the factory.

3

MANUAL COCKING SYSTEM

The manual cocking system increases safety and sits comfortably directly on the breechblock. The beautifully shaped manual cocking lever is easy to operate and almost silent.

4

TRIGGER

The precision trigger: crisp trigger; trigger pull weight is about 850 grams.

5

MAGAZINE

The pressure mechanism of the magazine inserts makes it easy to load and unload your rifle. Depending on caliber, magazines with 2 to 5 rounds each are available.

6

INTERCHANGEABLE BARREL SYSTEM

The technology with which the barrel is fixed in the receiver supports a simple and fast barrel change.

7

RÖWAXX

The barrel is ceramic blasted and plasma nitrided using a special procedure developed by us. This creates a noble, silky-matte appearance, which is extremely corrosion-resistant and scratch-resistant.

8

CALIBER

All important calibers from .223Rem. up to .300Win.Mag. are included in the standard range.



6 Interchangeable Barrel System

7 RÖWAXX

8 Caliber

SIGNATURE



SIGNATURE®
Hunter

- Laminated wood stock in brown
- Quick adjustable cheek piece
- Length and height adjustable butt plate
- Individual gunstock system bedding
- Stock length (LOP): 34.5cm to 37.5cm
- Available in a left-hand version



SIGNATURE®
Luxury Thumbhole

- Walnut, wood class B
- Oiled, matt finish
- Hog back
- Bavarian cheek
- Drip nose in precious wood
- Individual gunstock system bedding
- Stock length (LOP): 36.5 cm



SIGNATURE



SIGNATURE®
Carbon FBT

- Modern carbon thumbhole stock
- Quick adjustable cheek piece
- Individual gunstock system bedding
- Stock length (LOP): 36.5 cm
- Weight: from 2.85 kg
- Available in a left-hand version



SIGNATURE®
Luxury

- Walnut, wood class B
- Oiled, matt finish
- Hog back
- Bavarian cheek
- Drip nose in precious wood
- Individual gunstock system bedding
- Stock length (LOP): 36.5 cm
- Available in a left-hand version





SIGNATURE



SIGNATURE®
Standard

- Walnut, wood class A
- Oiled, matt finish
- Straight rear stock
- Monte Carlo cheek piece
- Straight fore-end
- Individual gunstock system bedding
- Stock length (LOP): 36.5 cm



SIGNATURE®
Allround Flex

- Polymer stock with 30% glass fibre content
- Straight buttstock without cheek piece
- Straight fore-end
- Aluminium block bedding
- Stock length (LOP): 36.5 cm
- Available in a left-hand version







TECHNICAL DATA SIGNATURE®	
BARREL	Special rifle barrel steel in various barrel lengths. Ceramic blasted and plasma nitrided. This creates an enormously resistant surface, which is extremely corrosion and scratch resistant.
RECEIVER	This rifle is equipped with an interchangeable barrel system.
CALIBER AND DIMENSIONS	<p>Length 510 mm Ø 17 mm M15x1 Muzzle thread: .308Win. 8X57IS 8,5x55 Blaser (L=520mm)</p> <p>Length 560 mm Ø 17 mm M15x1 Muzzle thread: .223Rem. 6.5Creedmoor 6.5x55Se 7x64 .30-06Sprg. 9,3x62</p> <p>Length 610 mm Ø 17 mm M15x1 Muzzle thread: .300Win.Mag</p>
STOCK	Depending on the model walnut, polymer, or laminated wood. Recoil absorbing rubber buttplate, checkering on pistol grip and fore-end, sling swivels.
BOLT	Symmetrically arranged lug bolt, locked directly in the barrel with only 60° bolt lift, short strike distance for an extremely short lock time, double tension guide for pleasant repeating.
TRIGGER	Shotgun trigger: crisp trigger. Direct-acting trigger mechanism with only 0.3 – 0.5 mm release travel. Factory set trigger pull weight of approximately 850 grams.
MANUAL COCKING SYSTEM	Manual cocking system for increased safety. Ergonomically positioned and shaped manual cocking lever for easy and almost silent operation.
MAGAZINE	Removable magazine for 3 rounds for standard caliber and 2 rounds for magnum caliber. An extended magazine (+2 rounds) is available at extra charge (not for .223Rem.).
SCOPE MOUNTING	Mounting prepared with threaded holes 6-48 UNS on receiver. Demountable steel Picatinny rail professionally pre-mounted on gun receiver at no extra charge.
WEIGHT FROM APPROX. 3.0 KG	from approx. 3.0 kg

Changes and country-specific deviations possible.

TITAN 6

Rifles as they should be: sleek, reliable, and accurate. Our classic **TITAN 6®** rifles have impressed hunting enthusiasts for over a decade with their superior technology, perfect handling and timeless design.

When every second counts: These bolt-action rifles contribute significantly to the success of and suitability for a hunt with their intuitive handling in the crucial seconds before a shot.

No hunt is quite like the other and every hunter has his own unique requirements. We offer our **TITAN 6®** rifles in all major calibers, ranging from .222Rem. to .375Ruger in order to do justice to the most diverse hunting situations and each hunter's individual needs.

TITAN 6® marksmen have not only celebrated numerous successes on hunts, but also sport shooting victories all over Europe. These successes spur us on. Hence, we have also added sportive target stocks to our product range.



1 Stock

2 Receiver

3 Safety

4 Trigger

5 Magazine

TITAN⁶

1

STOCK

Choose from eighteen different stocks, which come in a range of different materials, designs and finishes.

2

RECEIVER

The receiver is made of hard anodized aluminium in a matte black finish. Alternatively, a steel receiver is also available.

3

SAFETY

The sliding safety catch is comfortably located at the stock wrist and can be operated almost entirely silently.

4

TRIGGER

Both single set and shotgun triggers are available for your rifle.

5

MAGAZINE

The pressure mechanism of the magazine inserts makes it easy to load and unload your rifle. Depending on caliber, magazines with 2 to 5 rounds each are available.

6

INTERCHANGEABLE BARREL

The technology with which the barrel is fixed at the receiver allows for the barrel to be swapped quickly and easily.

7

RÖWAXX

The gun barrel is ceramic-blasted and plasma-nitrided in a special process developed by us. This creates a silky-matte appearance that is extremely corrosion resistant and scratch resistant.

8

CALIBER

All major calibers from .222Rem. to .375Ruger are included in the standard range.



6 Interchangeable barrel

7 RÖWAXX

8 Caliber

TITAN 6



TITAN 6®
Hunter

- Laminated wood
- Different colours optional
- Height adjustable cheek piece
- Length adjustable rear stock
- The receiver is individually embedded in the gun stock
- Stock length (LOP): 34.5 cm to 37.5 cm
- Available in a left-hand version



TITAN 6®
Luxury Thumbhole

- Walnut, wood grade B
- Oiled, matt finish
- Hogs back
- Bavarian cheek piece
- Schnabel tip made from precious wood
- The receiver is individually embedded in the gun stock
- Stock length (LOP): 36.5 cm



TITAN⁶



TITAN 6[®]
Carbon

- Stock 100 % Carbon
- Vacuum-formed out of one piece
- Straight rear stock without cheek piece
- Straight fore-end
- Aluminium-block foundation
- Stock length (LOP): 36.5 cm
- Available in a left-hand version



TITAN 6[®]
Luxury

- Walnut, wood grade B
- Oiled, matt finish
- Hogs back
- Bavarian cheek piece
- Nosed tip made from precious wood
- The receiver is individually embedded in the gun stock
- Stock length (LOP): 36.5 cm
- Available in a left-hand version





TITAN 6



TITAN 6®
Allround Flex

- Polymer stock, consists of 30% fiberglass
- Straight rear stock without cheek piece
- Straight fore-end
- Aluminium-block foundation
- Stock length (LOP): 36.5 cm
- Soft-touch finish available
- Available in a left-hand version



TITAN 6®
Standard

- Walnut, wood grade A
- Oiled, matt finish
- Straight rear stock with Monte Carlo cheek piece
- Straight fore-end
- The receiver is individually embedded in the gun stock
- Stock length (LOP): 36.5 cm



TITAN 6®

Luxury Stutzen

- Walnut, wood grade B
- Oiled, matt finish
- Two-piece stock
- Hogs back
- Bavarian cheek piece
- Schnabel tip made from precious wood
- The receiver is individually embedded in the gun stock
- Stock length (LOP): 36.5 cm
- Only available with barrel length 510 mm
- Available in a left-hand version





TECHNICAL DATA TITAN 6®	
BARREL	Made from special rifle barrel steel in various barrel lengths. Ceramic blasted and plasma nitrided. This creates a surface, which is extremely corrosion resistant and scratch resistant.
INTERCHANGEABLE BARREL	This rifle has an interchangeable barrel system.
KALIBER	<p>Length 510 mm Ø 17 mm M15x1 Muzzle thread: .308Win. 8X57IS 8,5x55 Blaser (L=520mm)</p> <p>Length 560 mm Ø 17 mm M15x1 Muzzle thread: .223Rem. 6.5Creedmoor 6.5x55Se 7x64 .30-06Sprg. 9,3x62</p> <p>Length 610 mm Ø 17 mm M15x1 Muzzle thread: .300Win.Mag</p>
STOCK	Depending on the model available in walnut, polymer, laminated wood or carbon; recoil absorbing rubber butt plate, checkering on the pistol grip and fore-end, sling swivel.
BOLT	TITAN 6®: Symmetrically arranged 6-lug bolt; locked directly in the barrel with only 60° bolt lift; short strike distance for an extremely short lock time of only approx. 1.7 milliseconds; double tension guide for comfortable repeating.
TRIGGER	Precision trigger or single set trigger: short, dry trigger; Standard trigger pull weight is about 1050 grams; direct acting trigger travel distance, set to 0.3 – 0.5 mm trigger path.
SAFETY	Ergonomically shaped 3-position safety catch on the grip; triple action with tab and bolt knob on the trigger, sear and bolt.
MAGAZINE	Removable stack magazine for 2 rounds with medium- and magnum- calibers and 3 rounds with mini- and standard-calibers. An extended magazine (+2 rounds) is available at extra charge (not for .223Rem.).
SCOPE MOUNTING	Mounting prepared with threaded holes 6-48 UNS on receiver. Demountable steel Picatinny rail professionally pre-mounted on gun receiver at no extra charge.
WEIGHT	approx 2.9 kg

Changes and country-specific deviations possible.

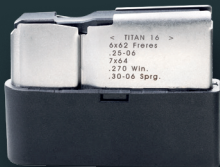
BECAUSE EVERY DETAIL COUNTS

You can find further accessories on our website!



MUZZLE THREAD WITH PROTECTIVE SLEEVE

With the Signature, the M15x1 muzzle thread and the corresponding protective sleeve are included as standard.



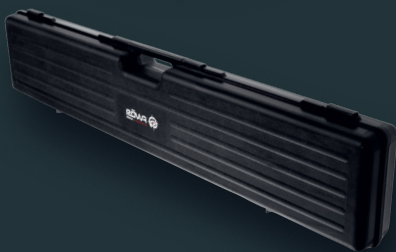
MAGAZINE

Loading and unloading the gun is pleasantly user-friendly thanks to the insertable magazine. Depending on the selected caliber, the standard magazine contains 2 or 3 rounds. The optionally available driven hunt magazine increases the loading capacity to +2 shots.



MODEL PLATE

On selected models, the rifle stock is equipped with a reversible model plate made of stainless steel. So you can have this stainless steel plate engraved individually on the blank side and thus refine your Signature.



RIFLE CASE

Included in the standard scope of delivery. The RÖWA rifle case is made of impact-resistant polypropylene.

The foam insert is precisely tailored to the internal dimensions of the gun case and provides optimum protection for the rifle. The four sliding latches and a combination lock close the rifle case optimally.

SHOW CHARACTER



PRACTICAL OPERATION

The added safety feature: when the ergonomically shaped manual cocking lever is pressed to the right, the striker spring is tensioned. Only then is the Signature ready to fire just before the decisive shot. By simultaneously pressing the lower locking knob and the manual cocking lever, the manual cocking lever can be moved back to the left into the home position. As soon as this is done, an unintentional firing is no longer possible due to the relaxed striker spring. In this basic position, a chamber lock is also active, which prevents the rifle from opening unnoticed. By pressing the locking knob, the manual cocking lever can be moved a further distance to the left, thus deactivating the chamber lock. This allows the rifle to be unloaded absolutely safely after the hunt with the striker spring relaxed.



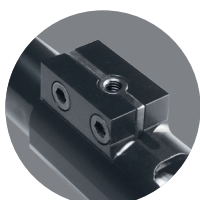
PRACTICAL OPERATION FOR MODEL TITAN6

The ergonomically positioned sliding safety catch on the wrist of the stock enables simple and intuitive operation. It features three positions: In the rearmost position, the double-action safety is active and the chamber lock is engaged. In the middle position, the double-action safety remains active, but the chamber lock is deactivated so the rifle can be safely loaded or unloaded. In the frontmost position, the rifle is unlocked and ready to fire.



SUPERIOR SAFETY

The Signature is a hunting rifle with a classic rotary bolting devices. The locking lugs lock directly into the barrel and are considered the most secure locking system for this type of rifle. The large contact area due to the high number of locking lugs provides a gain in safety.



HIGH FLEXIBILITY

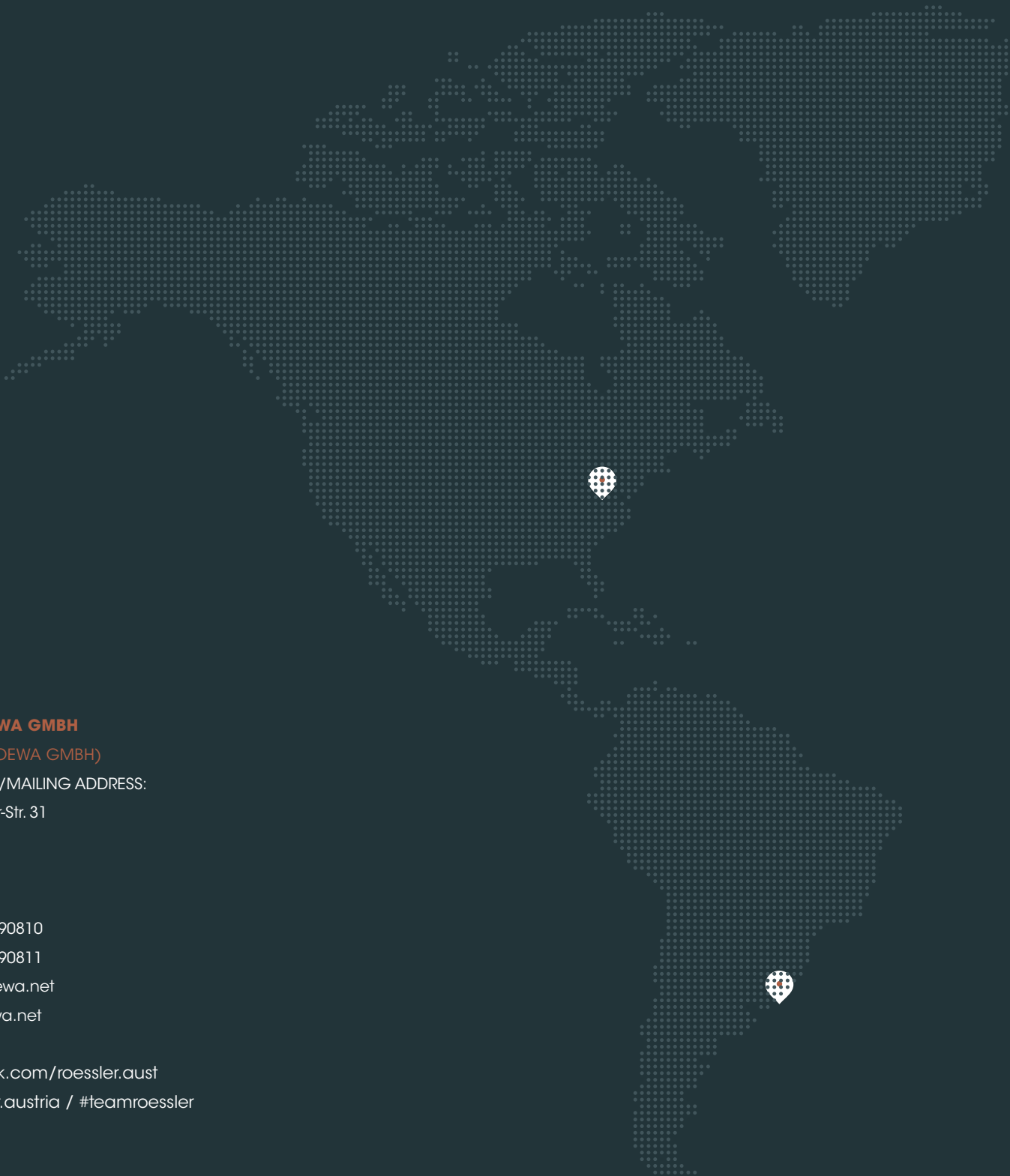
More options in the field: With the Signature an uncomplicated barrel change is possible at any time. With a few simple steps, you can change the caliber of the gun and adapt it to the current hunting conditions. Thus, with a single bolt action rifle, you make a fine impression both in high seats and during driven hunts.



HIGHEST PRECISION

More power: The reliability of RÖWA rifles and their precision in the shot prove the excellent quality of manufacturing and materials. Thanks to innovative technology and experienced partners with a long tradition and expertise, the highest quality standards are thus achieved and also rewarded: with consistently positive reporting in the media, with high customer satisfaction and with continuous successes on the world market.

IN THE WORLD AT HOME



RÖSSLER RÖWA GMBH

(ROESSLER ROEWA GMBH)

PRODUCTION/MAILING ADDRESS:

Prof. Schlosser-Str. 31

6330 Kufstein

AUSTRIA

T: +43 5372 90810

F: +43 5372 90811

E: office@roewa.net

W: www.roewa.net

 facebook.com/roessler.aust

 @roessler.austria / #teamroessler

Rössler RÖWA has been operating successfully internationally for over 20 years and has earned a reputation as a high-quality specialist supplier of hunting rifles  **made in Austria**. Our rifles are now represented on all five continents and impress hunters and shooters with their precision and handling during shooting, intuitive operation, solid workmanship and elegance.





Scan the QR code with your smartphone and discover the latest version of our catalogue directly online. Browse conveniently through the current contents - we hope you enjoy browsing!

Your RöWa specialist dealer

Subject to technical changes.
Country-specific deviations possible.
Catalogue images are sample images.

www.roewa.net